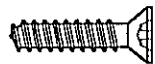
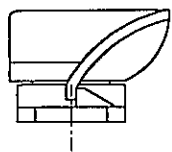
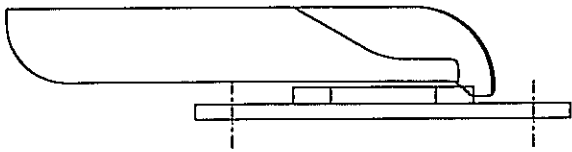


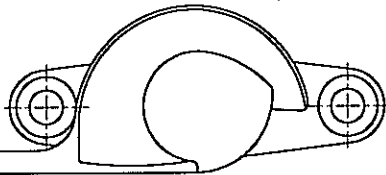
Component Identification



19 X No8 C'SK HEAD ST/ST
SELF TAPPING SCREWS
2 No. PER FITCH CATCH

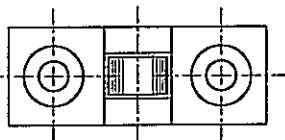


FITCH CATCH FF/VS

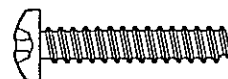
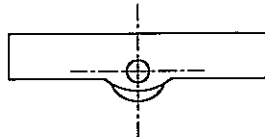


FITCH CATCH KEEPER

SECURE FITCH CATCH
KEEPER WITH 2 No.
Ø 3.2mm (1/8")
POP RIVETS.



SGA ROLLER

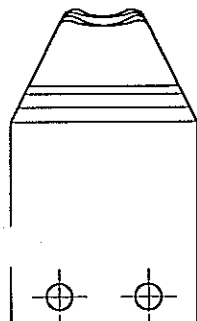


25 X No10 PAN HEAD ST/ST
SELF TAPPING SCREWS
ONE PER SPIRAL BALANCE

SPIRAL BALANCES
AVAILABLE FROM:-
CALDWELL HARDWARE
LEAMINGTON SPA
WARWICKSHIRE
TELEPHONE 01926 451767
FACSIMILE 01926 315370
(SEE TABLE S10-6-1)



16 X No6 CSK HEAD PLTD
SELF TAPPING SCREW
2 No. PER ROLLER



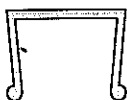
SGA PCS
COVER STRIP



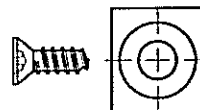
SGA GSKT 4
4mm GASKET



SGA GSKT 6
6mm GASKET



SGA BPC
'U' CHANNEL - BLACK



SIEGENIA 354.2731.5.007.A1
ANTI-CRAB BLOCKS FIXED
WITH 10 X No6 CSK POZI ST/ST
HEAD SELF TAPPING SCREW
8No REQUIRED PER WINDOW
COLOUR - BLACK



SGA W/P 475P
WOOLPILE (4.8 475P)

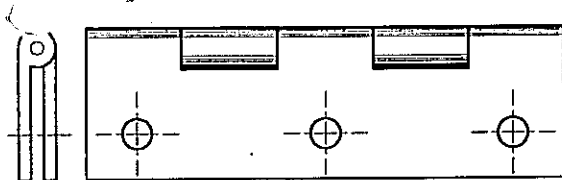


SGA W/P 825P
WOOLPILE (4.8 825P)



SGA AS
10x3 ADHESIVE STRIP

'DOUBLE UP' STRIP FOR SIDE
HUNG SASH APPLICATIONS
SEE PAGE S10-5-2

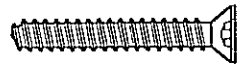


BRASS BUTT HINGE

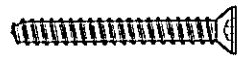
M4x10 C'SK HEAD ST/ST
MACHINE SCREWS & NUTS
TO FIX HINGE TO SASH



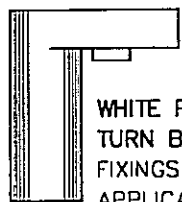
FIXINGS FOR HINGE
TO STRUCTURE TO
SUIT APPLICATION (No8)



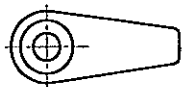
30 X No8 C'SK HEAD ST/ST
SELF TAPPING SCREWS
FOR OUTER FRAME ASSEMBLY



30 X No6 CSK HEAD ST/ST
SELF TAPPING SCREWS
FOR SASH FRAME ASSEMBLY



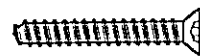
WHITE PLASTIC
TURN BUTTON
FIXINGS TO SUIT
APPLICATION (No6)



CALDWELL UK120
BOTTOM BRACKET



10 X No6 CSK HEAD PLTD
SELF TAPPING SCREW
2 No. PER BRACKET



25 X No6 CSK HEAD PLTD
SELF TAPPING SCREW
ONE PER BRACKET